



## What is Early Achievers?

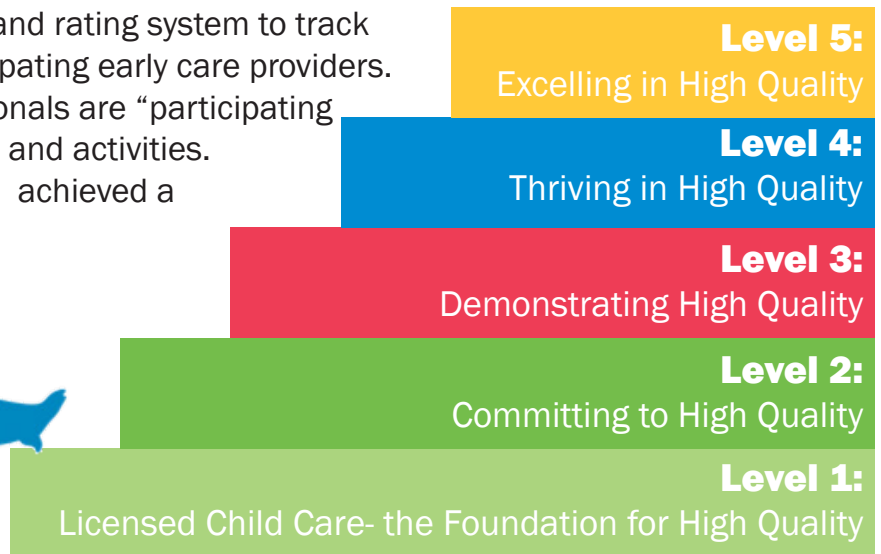
Early Achievers is a framework for improving the quality of early care in Washington to ensure that:

- Children have access to high-quality early learning experiences that help them develop the skills they need to be successful in school and beyond.
- Parents can find high-quality child care and early learning programs that fit their needs by providing evidence-based information about facility quality.
- Early learning professionals have access to the resources and supports they need to provide quality care that supports each child’s learning and development.

Early Achievers is building a state-wide system of high quality early learning by bringing families, early learning professionals, and resources together to support each child’s learning and development.

## How does Early Achievers work?

Early Achievers uses an easy-to-understand rating system to track growth in quality improvement of participating early care providers. At Levels 1 and 2, early learning professionals are “participating in quality improvement” through training and activities. Facilities that are rated Levels 3–5 have achieved a “quality level of excellence” through an on-site evaluation.



Early Achievers ratings are evidence-based so you can feel confident about your child care choice. You can find your providers participation and rating status at [www.del.wa.gov/check](http://www.del.wa.gov/check).

**Ask your child care provider about Early Achievers today!**

# Because Quality Matters.

[www.del.wa.gov](http://www.del.wa.gov) | [www.facebook.com/WashingtonDEL](https://www.facebook.com/WashingtonDEL) | [twitter.com/DEL\\_wa](https://twitter.com/DEL_wa)